



**ALASKA DIVISION OF HOMELAND SECURITY &
EMERGENCY MANAGEMENT**



SITUATION REPORT 22-084 • MARCH 25, 2022

Toll-Free 1.800.478.2337

Anchorage Area 907.428.7000

SEOC 907.428.7100

<p><u>SEOC Preparedness Level</u> Level 1 – Routine Operations</p>	<p>http://ready.alaska.gov</p>	<p><u>National Terrorism Advisory System:</u> Read the NTAS Bulletin here</p>
<p><u>Maritime Security (MARSEC)</u> Level:1-Minimum Appropriate Security Measures</p>	<p>WHO Novel Coronavirus Pandemic (COVID-19): 2019 Novel Coronavirus</p>	<p><u>Alaska Military Installation Force Protection Level:</u> FPCON Bravo</p>

(Significant changes from previous situation reports are in red.)

Significant Issues:

Decemehr 2021 Inteior Severe Winter Storm:

Yesterday, President Biden approved a Major Disaster Declaration for Public Assistance for the severe winter storm and straight-line winds that impacted Interior Alaska during late December 2021.

<https://www.fema.gov/press-release/20220325/president-joseph-r-biden-jr-approves-disaster-declaration-state-alaska>

Threat Level Changes:

None.

State of Alaska Department of Health and Social Services (DHSS)

DHSS is now leading the State of Alaska COVID-19 Recovery through Department Operations, supported by SEOC and other state departments as required.

For current COVID-19 information, see:

<https://covid19.alaska.gov/>

<https://www.cdc.gov/coronavirus/2019-ncov/index.html>

NTAS BULLETIN

To read current or expired advisories, click the link below:

<https://www.dhs.gov/national-terrorism-advisory-system>

Travel Alerts and Conditions

For current driving conditions dial 511 or link to <http://511.alaska.gov/>

Barry Arm Landslide / Tsunami Risk

For the latest information on the Barry Arm Landslide and Tsunami risk, click here:

[DGGs Barry Arm Landslide and Tsunami Hazard](#)

Recent Earthquakes

USGS Earthquake Information: <http://earthquake.usgs.gov/>

National Tsunami Warning Center: <http://tsunami.gov/>

Alaska Volcanoes

Davidof Alert Level: **Advisory** and Aviation Color Code: **Yellow**

Great Sitkin Alert Level: **Watch** and Aviation Color Code: **Orange**

Pavlof Alert Level: **Watch** and Aviation Color Code: **Orange**

Semisopchnoi Alert Level: **Watch** and Aviation Color Code: **Orange**

For Alaska Volcano updates, go to: <https://www.avo.alaska.edu/>

Air Quality Index (AQI) Advisories

For the most up to date Air Quality Index Advisories:

<http://dec.alaska.gov/Applications/Air/airtoolsweb/Home/Index>

Spills of Oil and Hazardous Substances

The ADEC Spill Prevention and Response page is located at:

<http://dec.alaska.gov/spar/ppr/spill-information/response/>

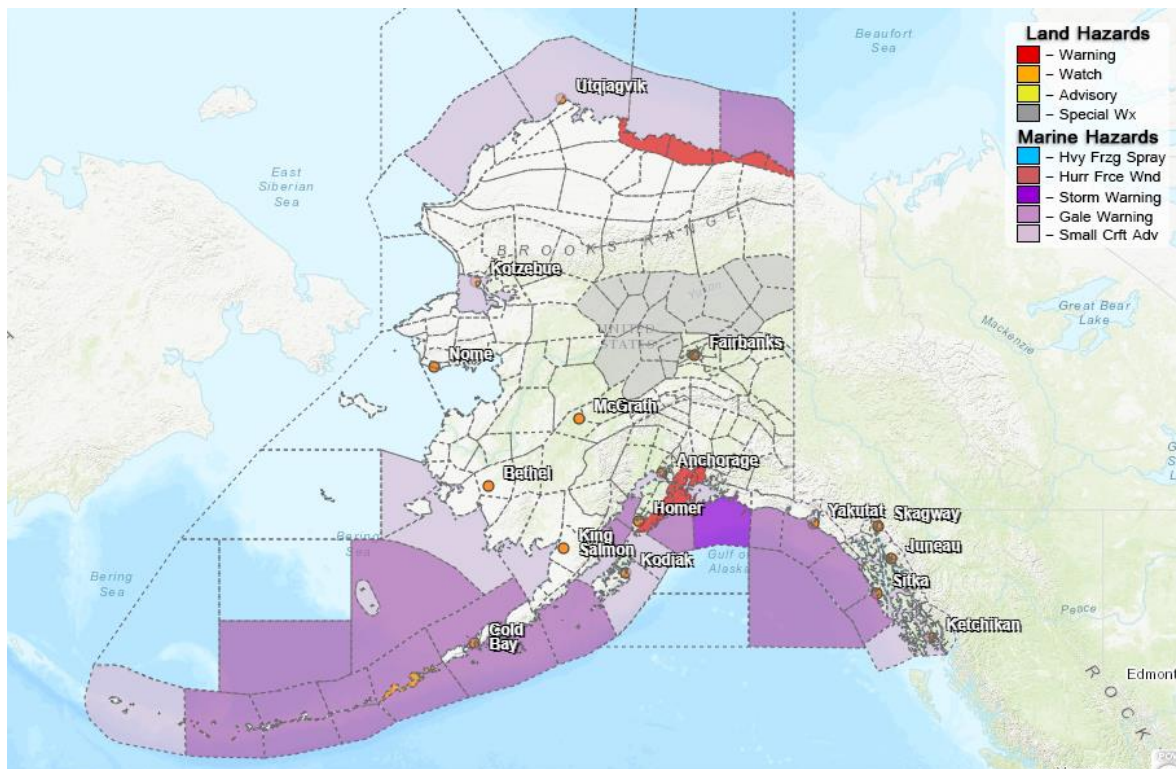
Alaska Cyber Security Information

State Employees may sign up for cyber security notifications and alerts at

<https://oit.alaska.gov/security>

CISA-Cybersecurity Services and Tools: www.cisa.gov/free-cybersecurity-services-and-tools

Significant Weather:



A Blizzard Warning remains in effect until midnight Saturday for the Central and Eastern Beaufort Sea Coasts.

Winter Storm Watches have been issued for the following areas:

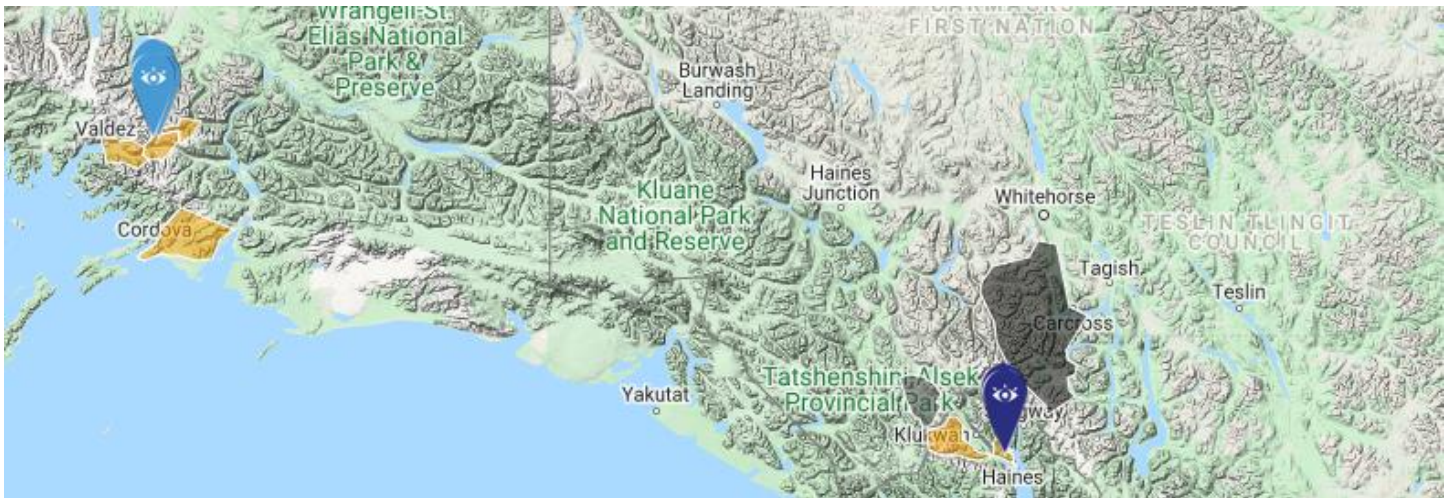
- Eastern Aleutians – Sunday morning through Monday evening. Up to 5 inches of snow.
- Pribilof Islands – Sunday morning through Sunday evening. Up to 2 inches of snow.

A Special Weather Statement has been issued for the Central Interior. Gusty winds are expected through this evening. Blowing and drifting snow is possible across highway summits within the region.

A Special Weather Statement remains in effect for the Western Prince William Sound area. Heavy snow and strong winds are expected to continue along parts of the Seward Highway through tonight. A total of one to two feet of snow accumulation is possible along the Turnagain pass.

For more information and the most current weather, Watches / Warnings / Advisories go to: <http://www.weather.gov/arh>.

Avalanche Forecast:



An avalanche warning remains in effect for the Western Chugach and Kenai mountains near Girdwood, Portage, Moose Pass, Turnagain pass, Summit Lake, Lost Lake and Seward through **Saturday** morning.

There are also areas near Cordova, Haines and Valdez with considerable risk.

Check the Avalanche Forecast Center closest to your area for the most up to date information on avalanche potential. <https://alaskasnow.org> or <https://www.weather.gov/afc/avalancheweather>

The Next Situation Report: will be 29 March 2022. A significant change in the situation or the threat level will prompt an interim report.

This report is posted on the internet at <https://ready.alaska.gov/sitrep>. To register for email distribution, go to <http://list.state.ak.us/mailman/listinfo/dhsem.situation.report>. Direct questions regarding this report to the SEOC at 907-428-7100 or seoc@alaska.gov